



Reflexion

Basic Exchange Setup Guide

“READ THIS DOCUMENT IN THE ENTIRITY PRIOR TO PERFORMING ANY OF THE STEPS REQUIRED TO SETUP REFLEXION. THE LAST PORTION OF THIS DOCUMENT CONTAINS INFORMATION THAT COULD PREVENT YOU FROM CAUSING YOUR MAIL SYSTEM TO BECOME CORRUPT.”

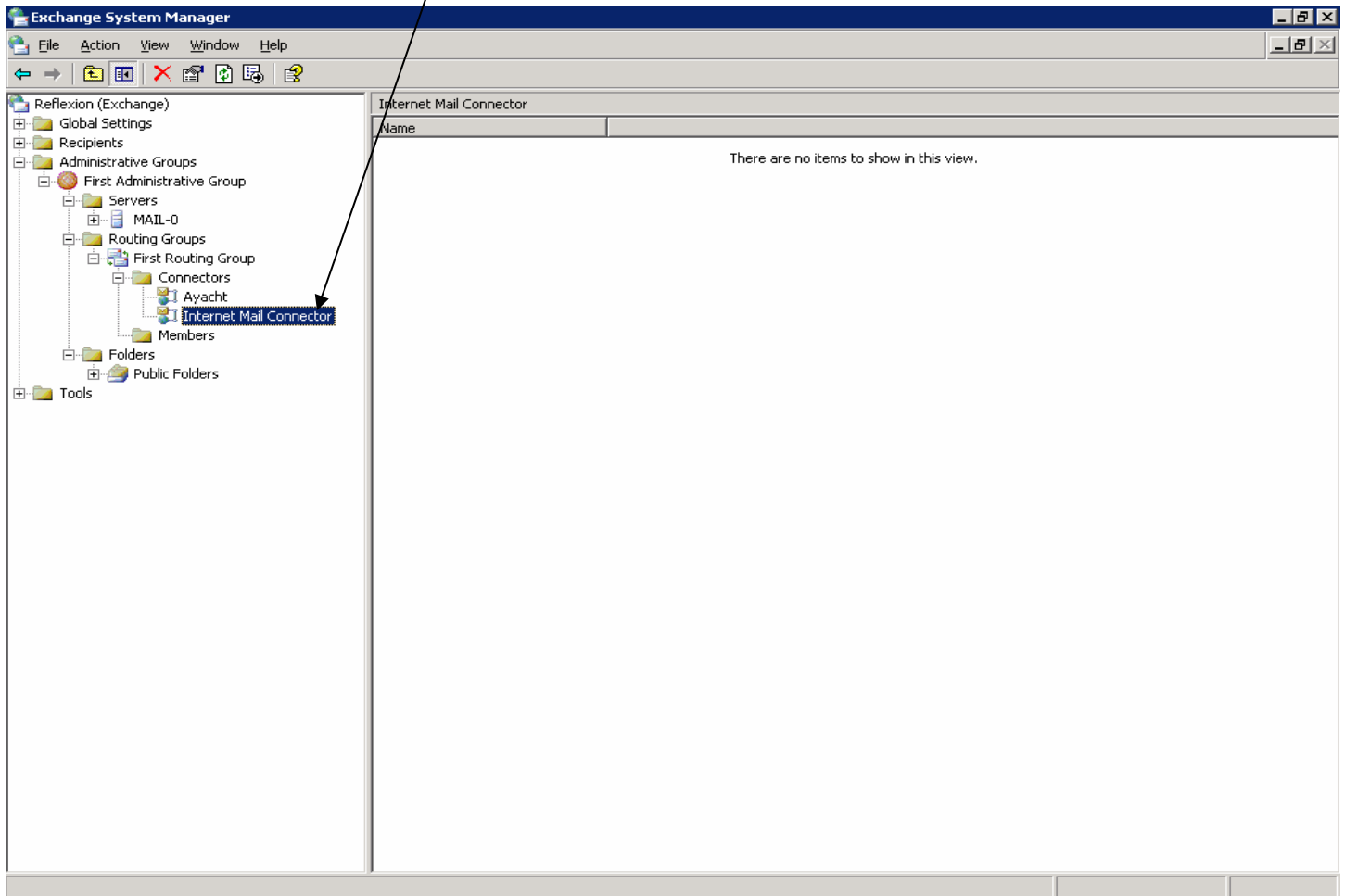
The following document and screenshots are provided for a single Microsoft Exchange Server 2000 and 2003 to Reflexion setup. These instructions are not provided with any warranty or technical support from Reflexion Network Solutions. It is assumed that you have an understanding and knowledge of Microsoft Exchange server mail flow, addressing and routing connectors. For more information on routing connectors and before using this document please download the following document from the Microsoft website.

<http://www.microsoft.com/technet/prodtechnol/exchange/2003/library/extransrout.msp>

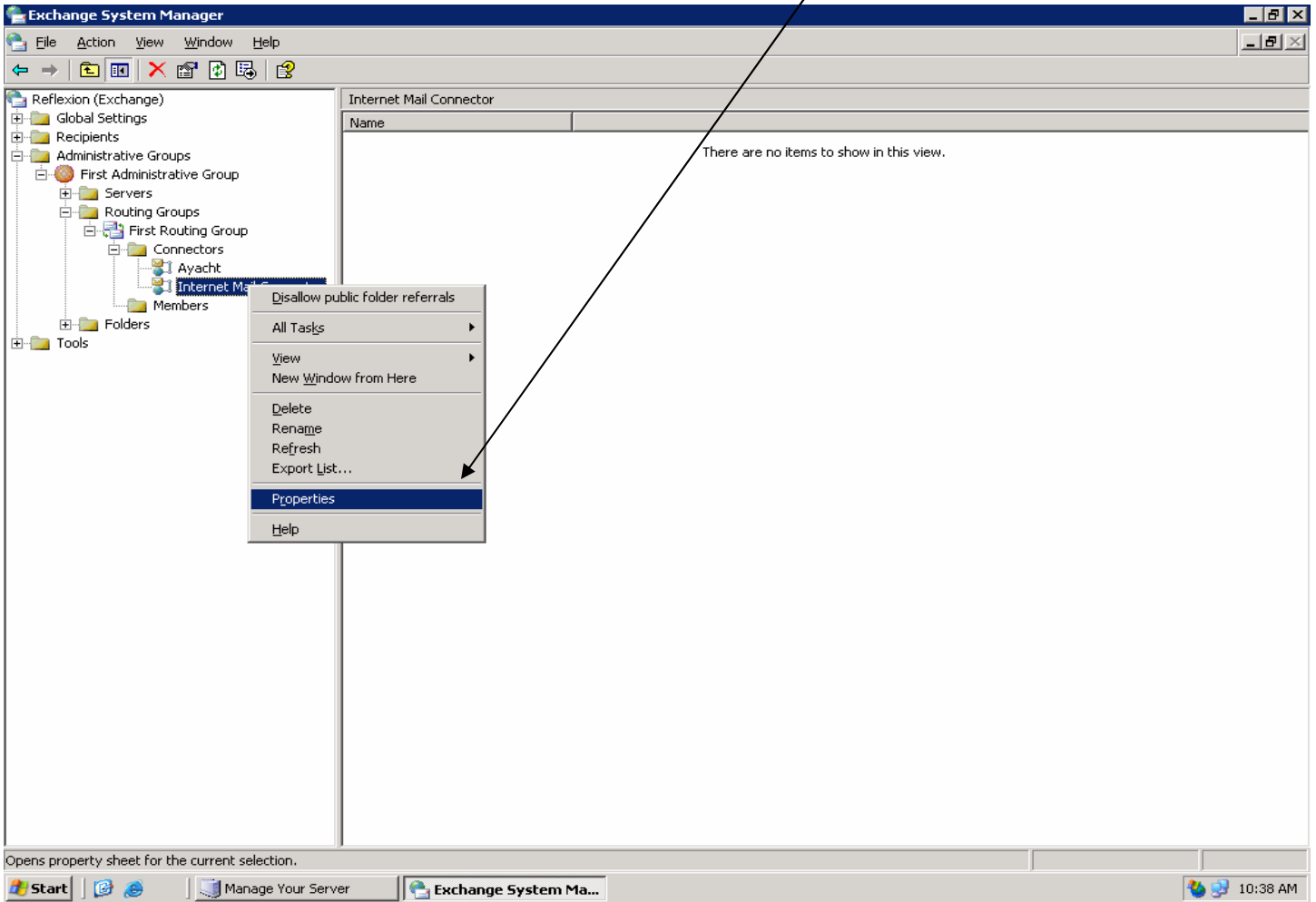
If you have multiple Exchange servers, you must read the document above and seek advice for your particular system from a Microsoft Exchange professional. Improper configuration of your Microsoft Exchange server will result in lost email and downtime.

Single Exchange Server

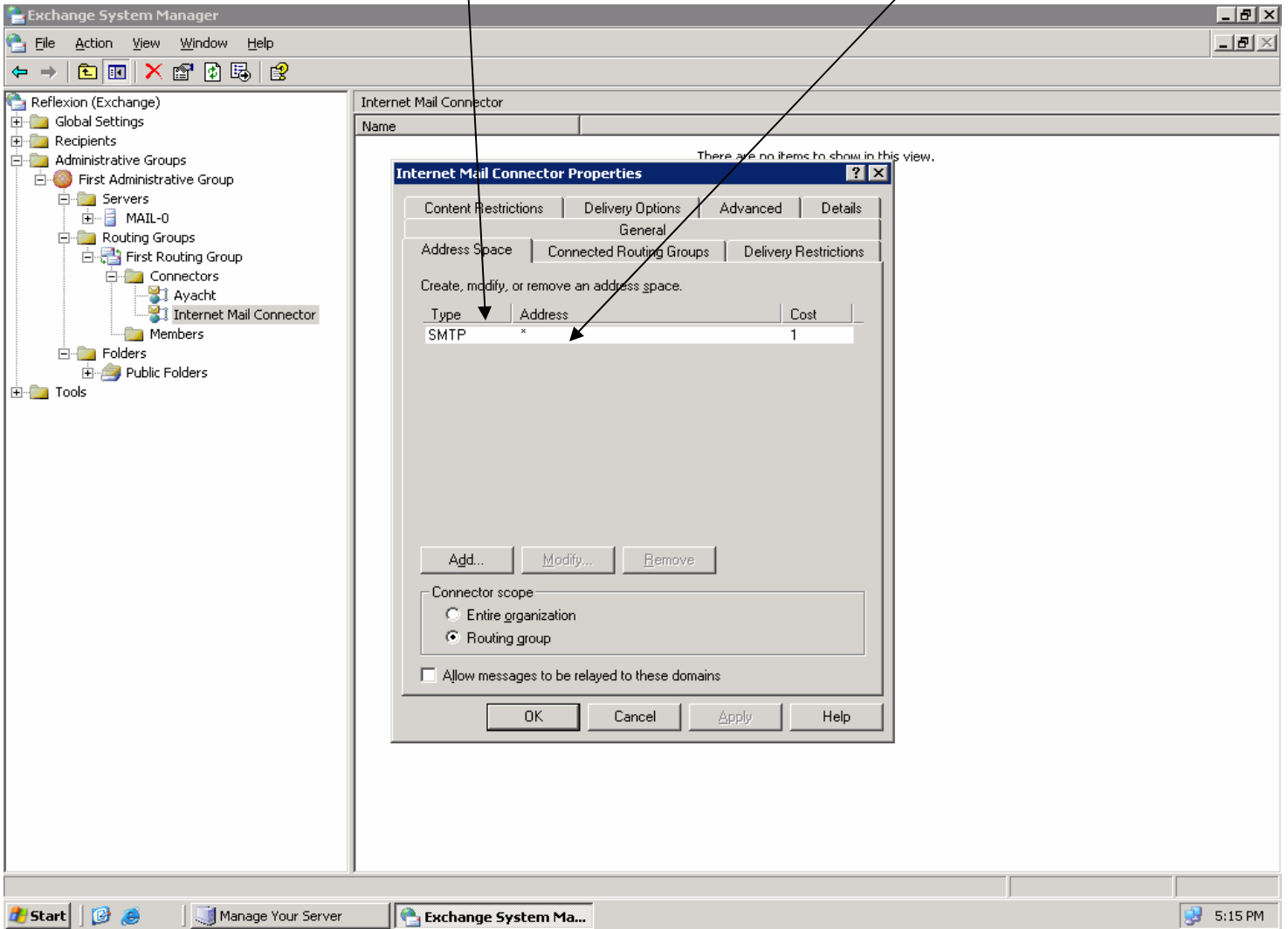
1. Open Exchange System Manager and expand the Routing Group Connectors to expose the following entry. Your connector may have a different name depending on your setup.



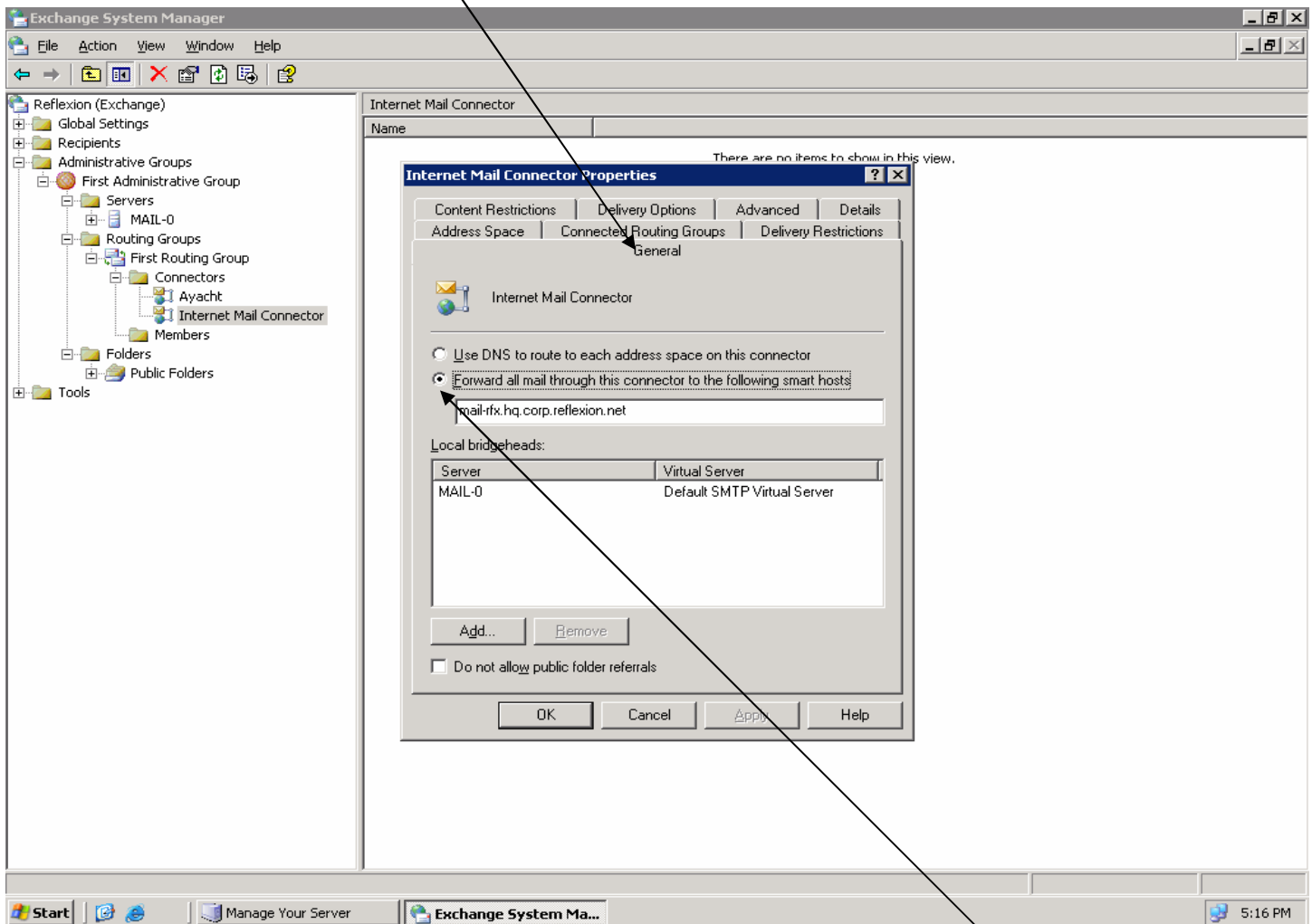
2. Right mouse click on the entry and choose properties.



3. Look at the address space tab and verify that is the same as below.

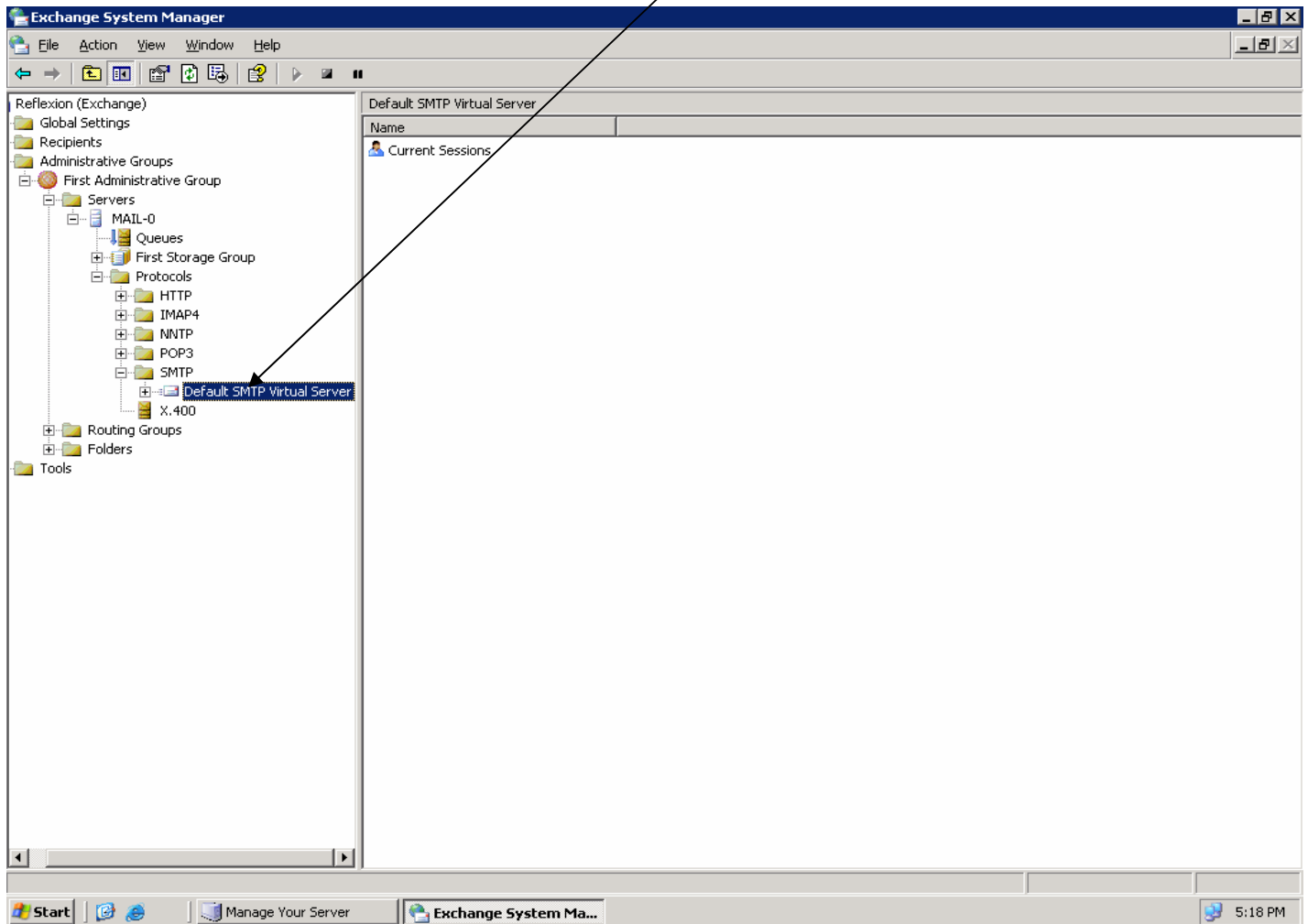


4. Then click onto the General tab.

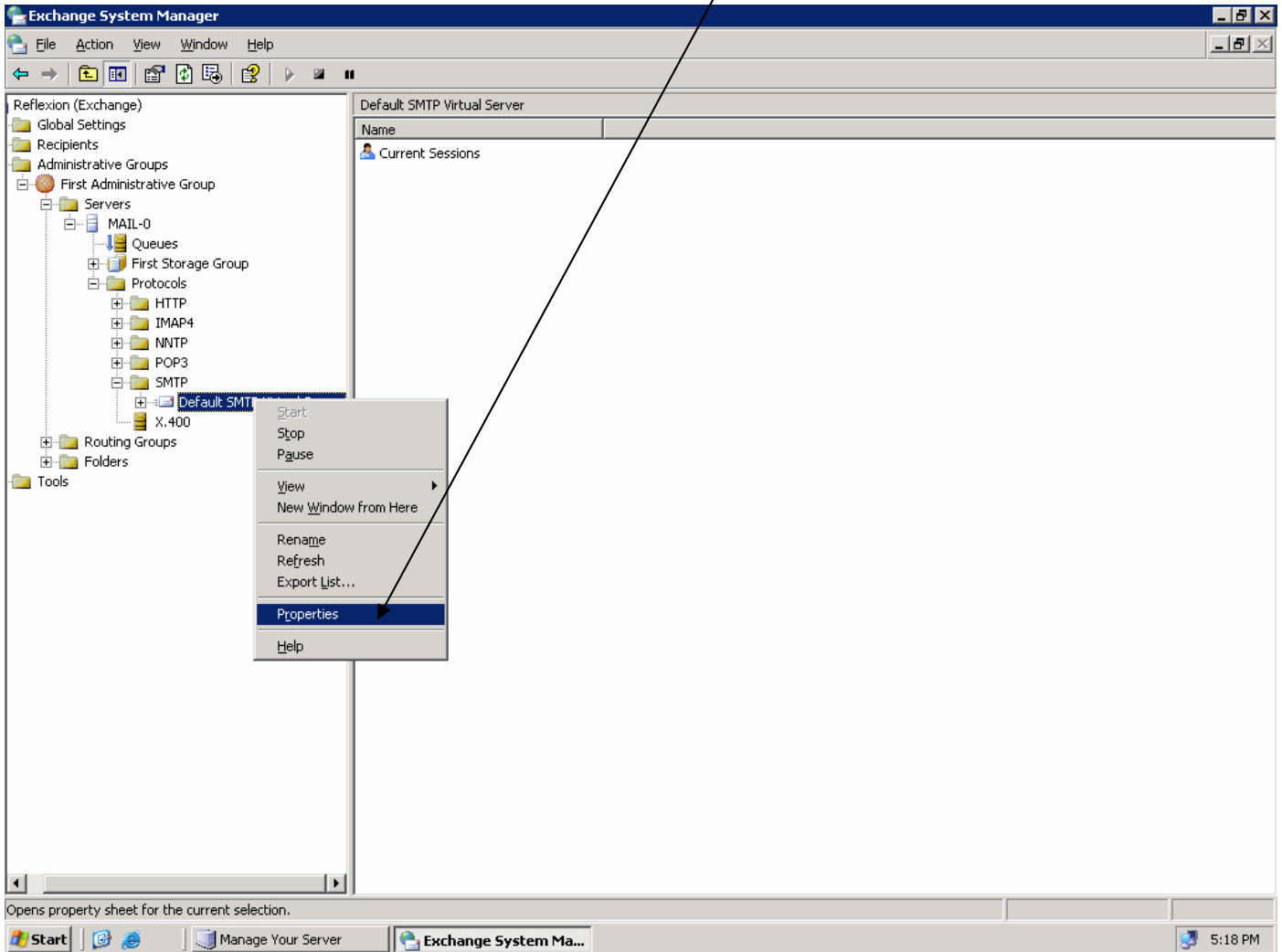


5. Check off the “Forward all mail through this connector to the following “smart hosts.”” In the box below fill-in the full qualified domain name of your Reflexion server.

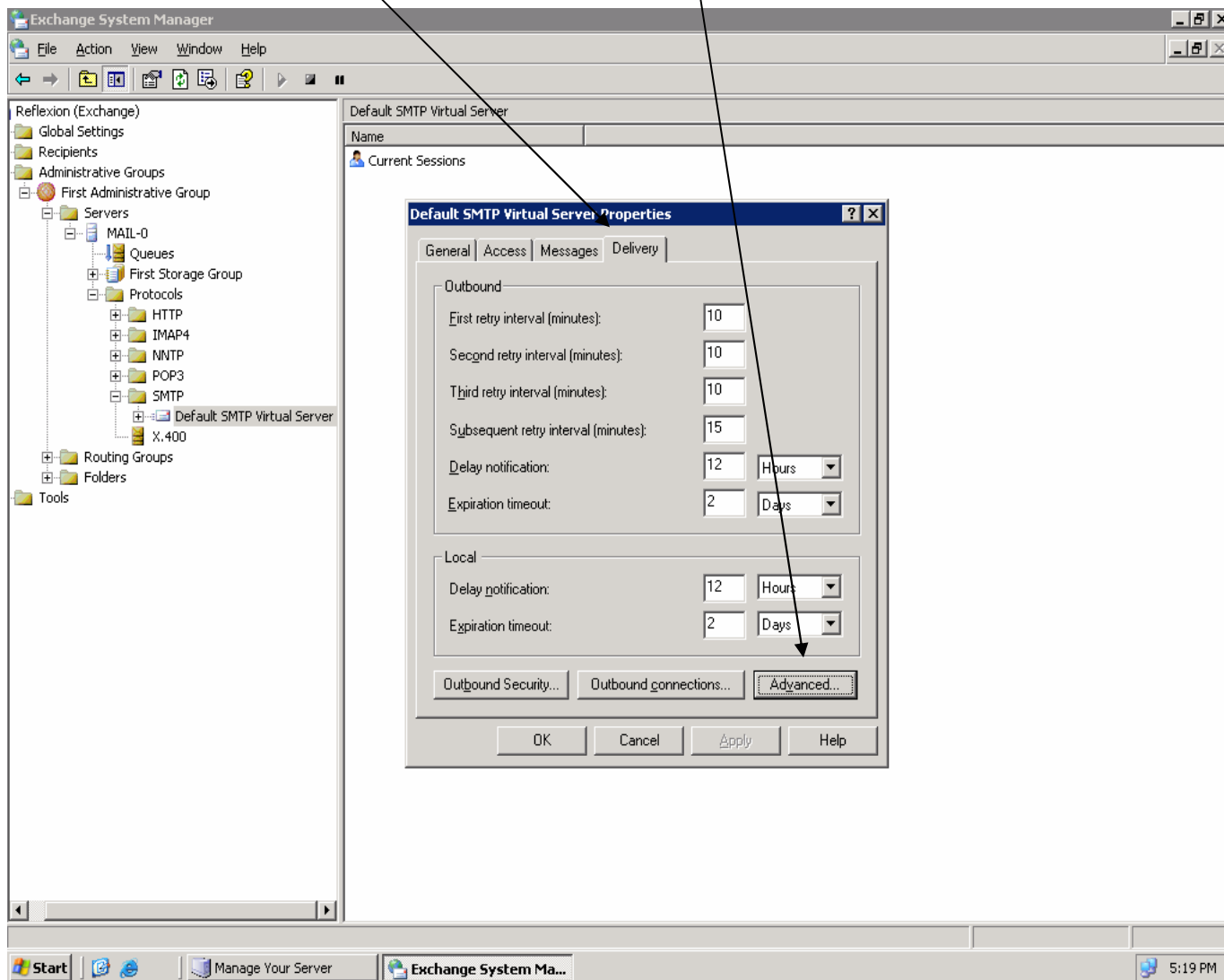
6. Open the Default SMTP Virtual Server entry. Your system should only have one unless you required a customized installation.



7. Right mouse click on the entry and choose properties.



8. Choose the "Delivery" tab and then the "Advanced" button.



9. Look in the “Smart Host” box and confirm that it is empty.

If it is not empty please investigate why it is not. The most common reason is that it points to an Anti-virus scanning gateway. You will need to reverse any previous work that you have already completed. You will need to make the changes in the system that Exchange already points to.

